

JACK BELL

DEVELOPMENT PERMIT

**CLIENT:
PROSCENIUM**

KORI CHAN
KChan@proscenium.ca
604.879.0118 X:105

**ARCHITECTS:
TEEPLE ARCHITECTS**

AVERY GUTHRIE
aguthrie@teeplearch.com
604.396.0996

**LANDSCAPE ARCHITECT:
G | ALA GAUTHIER + ASSOCIATES LANDSCAPE
ARCHITECTS INC.**

BRYCE GAUTHIER
bryce@gauthierla.com
604.317.9682

GABRIELA CARVALLO
gabriela@gauthierla.com
604.445.7768

LANDSCAPE DRAWING INDEX PERMIT

| Sheet No. | Sheet Name |
|-----------|-------------------------|
| L0.0 | COVER SHEET |
| L1.0 | PROPOSED LANDSCAPE PLAN |
| L1.1 | CONTEXT PLAN 1:200 |
| L1.2 | CONTEXT PLAN 1:200 |
| L1.3 | TREE MANAGEMENT PLAN |
| L2.0 | LAYOUT + MATERIALS PLAN |
| L2.1 | PLANTING PLAN |
| L2.2 | GRADING PLAN |
| L2.3 | LIGHTING PLAN |
| L3.0 | DETAILS |
| L4.0 | PLANT LIST + IMAGES |

TREE MANAGEMENT PLAN

| SYMBOL | DESCRIPTION |
|--------|--|
| | TREE PROTECTION BARRIER FENCE Refer to Tree Protection Notes for Requirements |
| | EXISTING TREE TO BE REMOVED Refer to Arborist Report |
| | EXISTING TREE TO BE RETAINED Refer to Arborist Report |

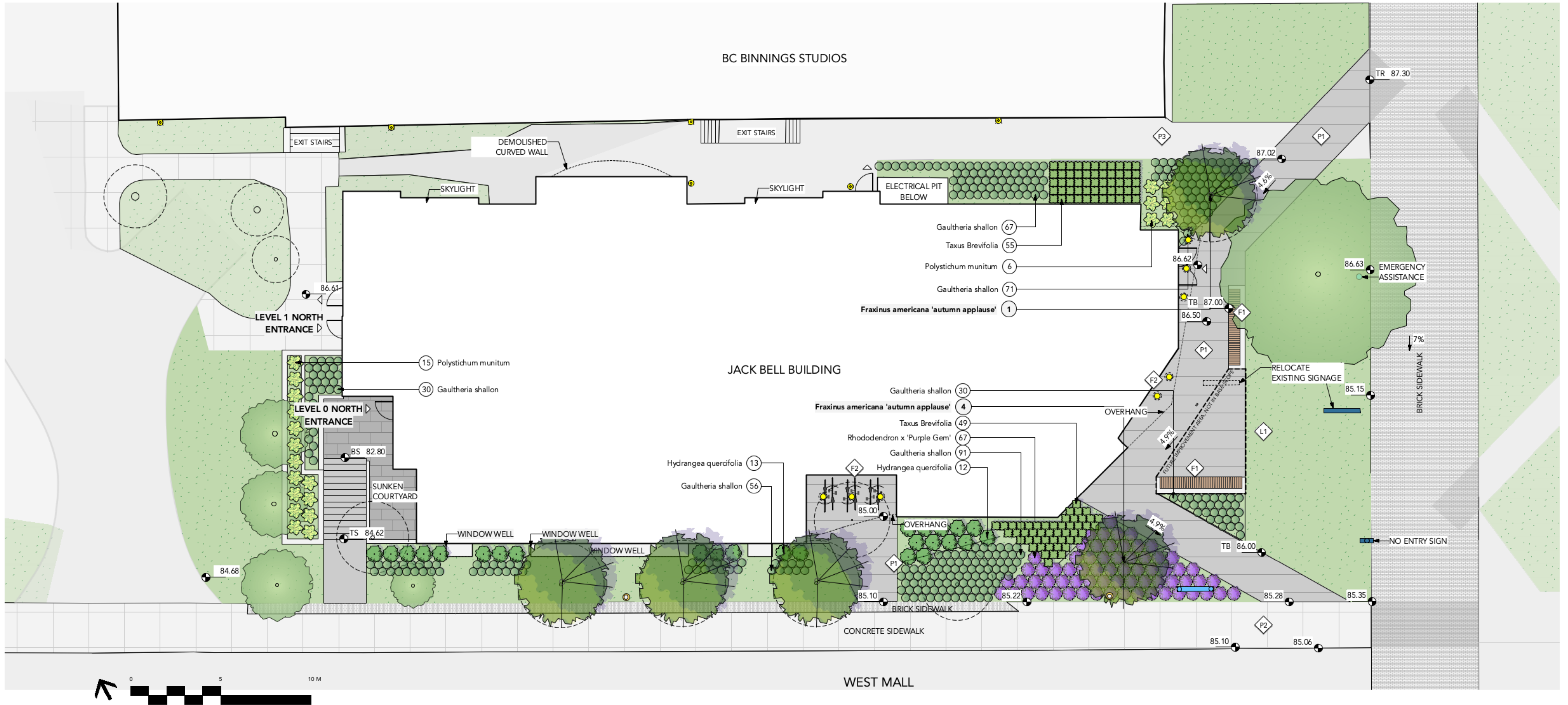
MATERIALS LEGEND

| SYMBOL | KEY | DESCRIPTION |
|--------|-----|--|
| | P1 | PLAZA PAVING CIP Concrete bands |
| | P2 | PAVING TYPE 2 Concrete Sidewalk Existing |
| | P3 | PAVING TYPE 3 CIP Concrete |
| | L1 | LAWN |

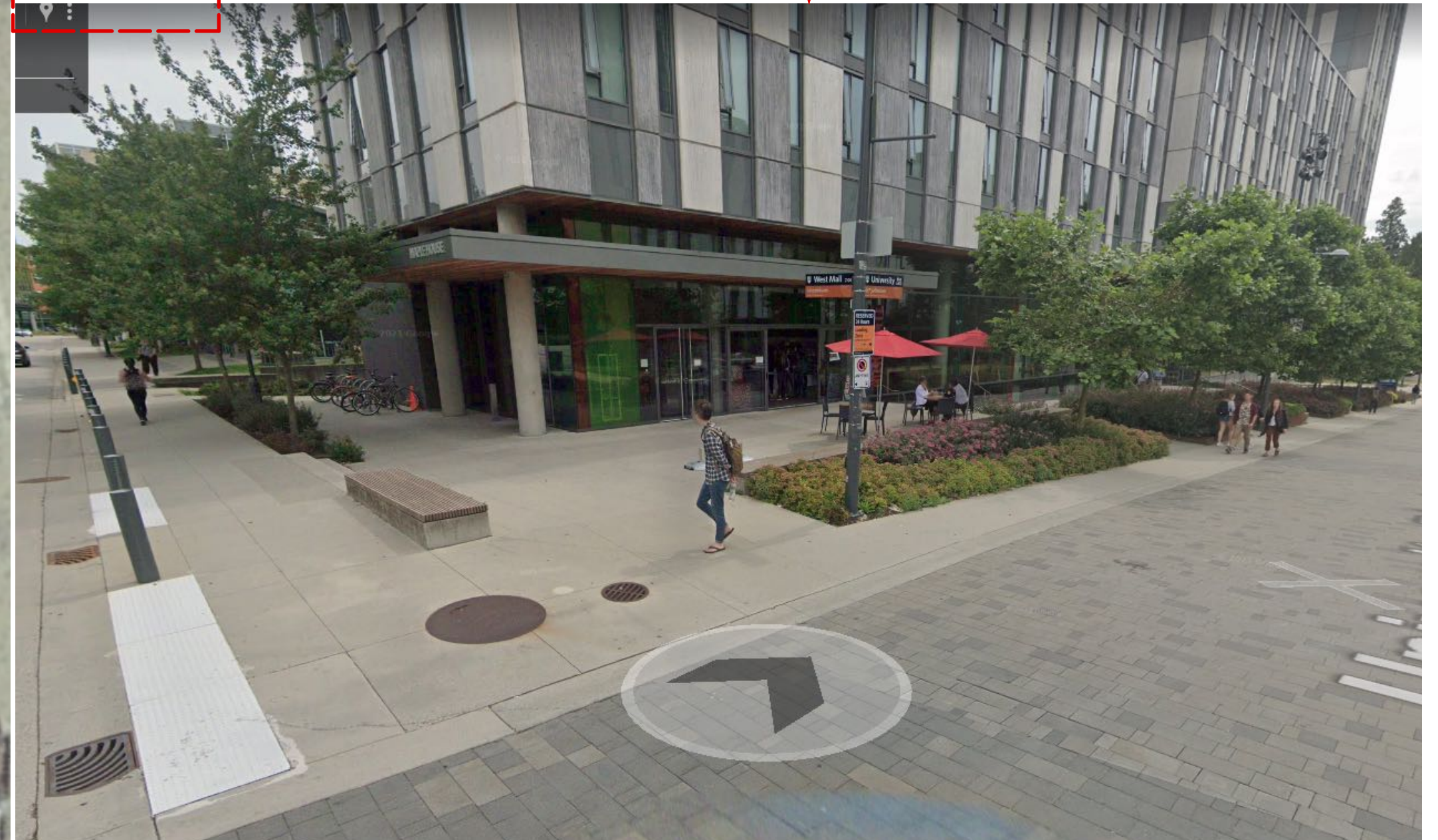
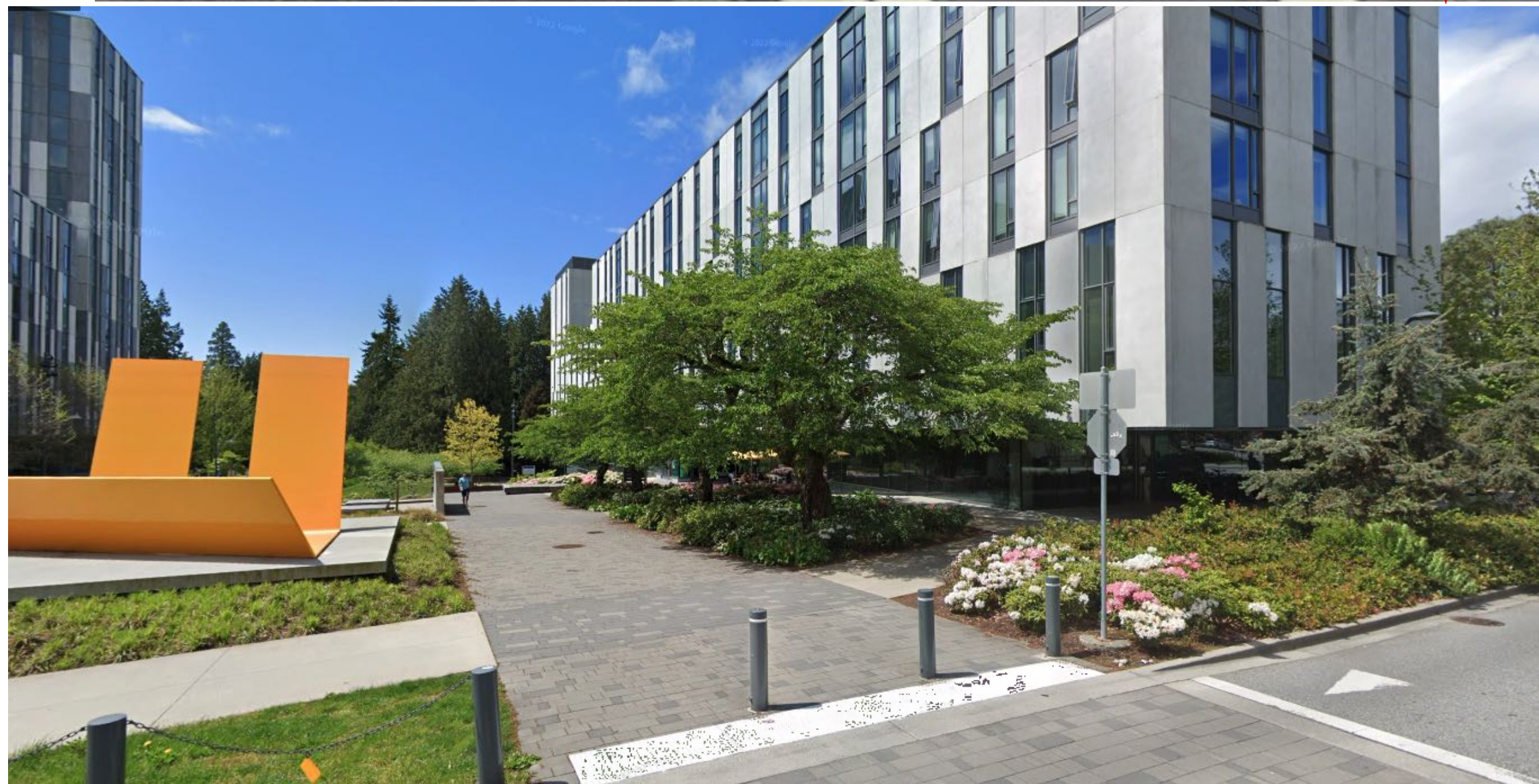
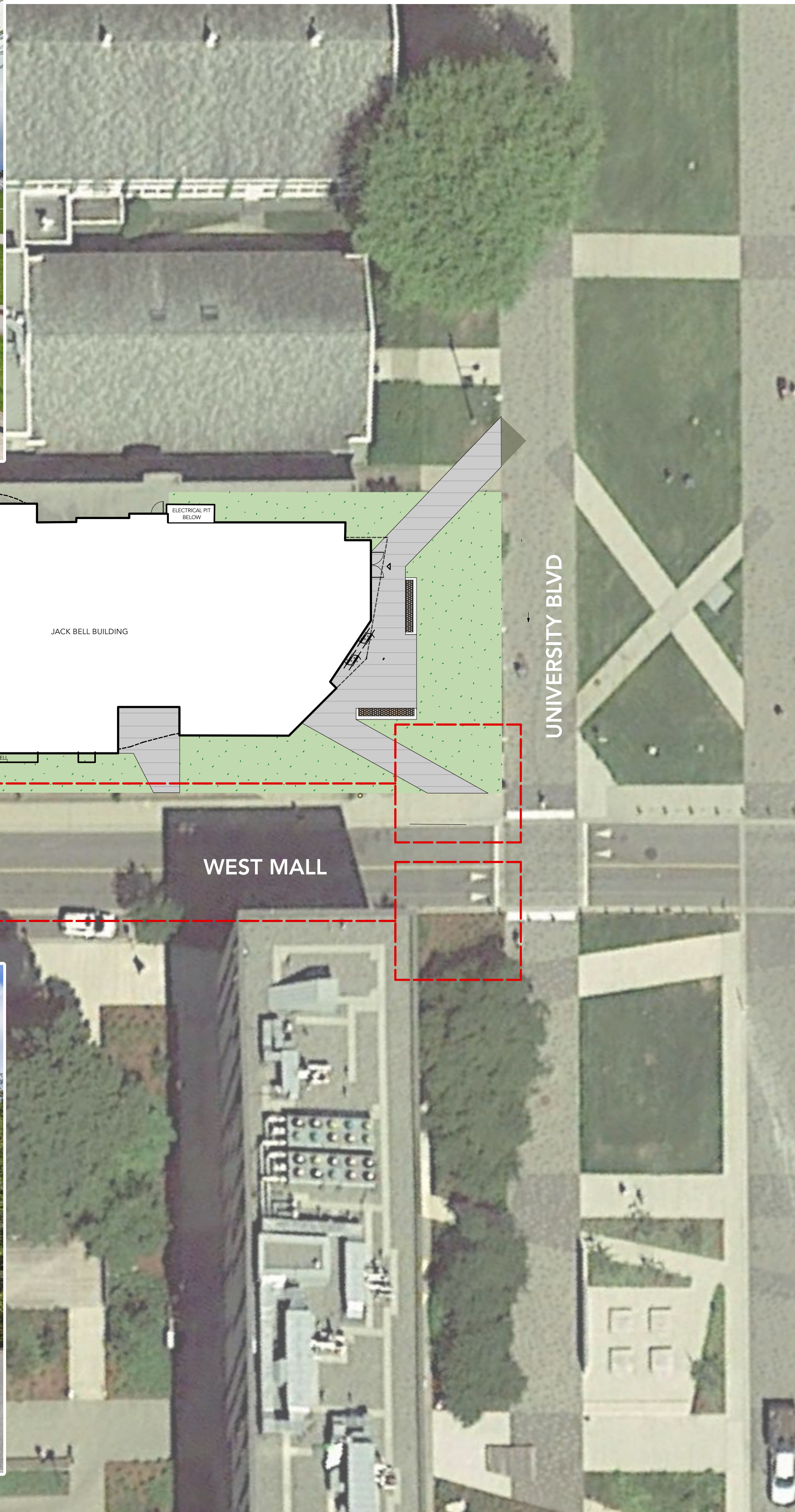
| | | |
|--|----|---|
| | F1 | 24"W CONCRETE BENCH WITH THERMALLY MODIFIED TIMBER SEAT TOP |
| | F2 | BIKE RACK TBD |

LIGHTING LEGEND

| SYMBOL | DESCRIPTION |
|---------|--|
| | EXISTING LIGHT POLE TO REMAIN |
| TYPE E | EXISTING LIGHT POLE TO REMAIN |
| | PROPOSED LIGHT. REFER TO LIGHTING PLAN |
| TYPE X1 | PROPOSED LIGHT. REFER TO LIGHTING PLAN |
| | PROPOSED LIGHT. REFER TO LIGHTING PLAN |
| TYPE X2 | PROPOSED LIGHT. REFER TO LIGHTING PLAN |
| | EXISTING DEVICE TO REMAIN |
| TYPE 4 | EXISTING DEVICE TO REMAIN |







GENERAL TREE PROTECTION FENCING TYP NOTES:

1. ALL COMPONENTS AND WORKMANSHIP TO CONFORM TO BCLNA STANDARDS TYPICAL.
2. POSITION TREE STAKES INTO DIRECTION OF PREVAILING WINDS IF MINIMUM UTILITY SETBACKS PERMIT.
3. ALL TREE STAKES TO HAVE A MINIMUM 1.0m CLEARANCE FROM ALL U/G POWER, TELEPHONE AND GAS ALIGNMENTS.
4. ALL ROOTBALL HOLES TO BE DUG BY HAND WHEN CLOSER TO 1.0M (40") TO U/G POWER, TELEPHONE AND GAS ALIGNMENTS. FOR TREES WITH DRIP LINES FROM FROM 3M - 5M (9' - 15') FROM CONSTRUCTION ACTIVITY;
5. PLACE STANDARD 'SAFETY ORANGE' SNOWFENCE MIN. OF 4.5M (14'8") FROM TREE TRUNK. EXACT SIZE/SHAPE TO BE DETERMINED ON SITE
6. FOR EXCAVATION WITHIN 1-3M (3' - 9') OF ANY TREE'S DRIP LINE, ROOT PRUNING REQUIRED TO A DEPTH OF 500MM (20"). IMMEDIATELY AFTER EXCAVATION, PRUNE ALL EXPOSED ROOTS FLUSH WITH THE EXCAVATION WALL.
7. A MAXIMUM OF 25% OF ANY TREE'S ROOTS AT THE DRIP LINE SHOULD BE IMPACTED BY EXCAVATION IF THE TREE IS EXPECTED TO SURVIVE.
8. INSTALL AND MAINTAIN HOARDING IN CLEAN AND SAFE CONDITION THROUGHOUT CONSTRUCTION PROCESS.
9. HOARDING REQUIREMENTS ARE ON ALL EXISTING TREES THROUGHOUT CONSTRUCTION. ALL EQUIPMENT, SOIL, BUILDING MATERIAL AND OTHER DEBRIS SHALL BE KEPT OUTSIDE THE HOARDING.
10. IF HOARDING IS PUNCTURED AND DAMAGE OCCURS TO HOARDED TREE(S), NOTIFY LANDSCAPE ARCHITECT.
11. THE BEST METHOD TO AVOID SOIL COMPACTION IS TO KEEP OFF. THIS INCLUDES RESTRICTING ALL TRAFFIC BOTH VEHICULAR AND PEDESTRIAN FROM CROSSING OVER THE ROOT ZONES, AND RESTRICTING EVEN TEMPORARY MATERIAL STORAGE UNDER TREES.
12. EXCAVATION AROUND TREES WITHIN DRIP LINE OF TREES ONLY WHERE INDICATED ON PLANS AND AS DIRECTED BY THE CONSULTANT.
13. DURING ANY EXCAVATION WITHIN THE DRIP LINE OF A TREE THE CONTRACTOR SHALL EXCAVATE AROUND TREE ROOTS AS DIRECTED BY THE CONSULTANT. DO NOT CUT TREE ROOTS UNLESS DIRECTED BY THE CONSULTANT.
14. TREES AND OTHER DESIRABLE VEGETATION TO BE TOTALLY FENCED. FENCING TO BE MAINTAINED FOR THE DURATION OF THE PROJECT.
15. EXCAVATION FOR NEW CONSTRUCTION WITHIN THE DRIP LINES OF TREES: HAND EXCAVATE TO MINIMIZE DAMAGE TO ROOT SYSTEMS
16. USE NARROW TINE SPADING FORKS TO PROBE AND COMB SOIL TO EXPOSE ROOTS;
17. RELOCATE ROOTS INTO BACKFILL AREAS WHENEVER POSSIBLE. IF LARGE MAIN LATERAL ROOTS ARE ENCOUNTERED, EXPOSE BEYOND EXCAVATION LIMITS AS REQUIRED TO BEND AND RELOCATE WITHOUT BREAKING.
18. UTILITY TRENCHING WITHIN THE DRIP LINES OF TREES: TUNNEL UNDER AND AROUND ROOTS BY HAND DIGGING;
19. DO NOT CUT MAIN LATERAL ROOTS;
20. CUTTING OF SMALLER ROOTS THAT INTERFERE WITH INSTALLATION OF NEW WORK SHALL BE DONE WITH CLEAN SHARP TREE PRUNING TOOLS;
21. ROOTS THAT ARE ENCOUNTERED IMMEDIATELY ADJACENT TO THE LOCATION OF NEW CONSTRUCTION AND ARE TOO DIFFICULT TO RELOCATE SHALL BE CUT 150MM (6") BACK FROM NEW CONSTRUCTION. USE CLEAN SHARP TREE PRUNING TOOLS;
22. PROTECTION OF EXPOSED ROOTS: DO NOT ALLOW EXPOSED ROOTS TO DRY OUT PRIOR TO PLACEMENT OF PERMANENT COVER.
23. PROVIDE ONE OF THE FOLLOWING TEMPORARY REMEDIAL MEASURES:
 - A. PROVIDE TEMPORARY EARTH COVER. MAINTAIN MOISTURE.
 - B. PACK WITH WET PEAT MOSS. MAINTAIN MOISTURE.
 - C. PACK WITH FOUR LAYERS OF WET UNTREATED BURLAP. MAINTAIN MOISTURE.
25. TEMPORARILY SUPPORT AND PROTECT EXPOSED ROOTS FROM DAMAGE UNTIL PERMANENTLY RELOCATED AND COVERED WITH BACKFILL.
26. WATER PUDDLE BACKFILL AROUND ROOTS TO ELIMINATE VOIDS AND AIR POCKETS
27. REMOVAL OF STREET TREES TO THE SATISFACTION OF THE GENERAL MANAGER OF ENGINEERING SERVICES.

TREE MANAGEMENT PLAN

| SYMBOL | DESCRIPTION |
|--------|--|
| | TREE PROTECTION BARRIER FENCE Refer to Tree Protection Notes for Requirements |
| | EXISTING TREE TO BE REMOVED Refer to Arborist Report |
| | EXISTING TREE TO BE RETAINED Refer to Arborist Report |

3C BINNINGS STUDIOS

EXIT STAIRS

SKYLIGHT

ELECTRICAL PIT BELOW

JACK BELL BUILDING

OVERHANG

OVERHANG

BRICK SIDEWALK

CONCRETE SIDEWALK

WEST MALL

4005

EMERGENCY ASSISTANCE

RELOCATE EXISTING SIGNAGE

BRICK SIDEWALK

NO ENTRY SIGN



GENERAL LAYOUT + MATERIALS NOTES:

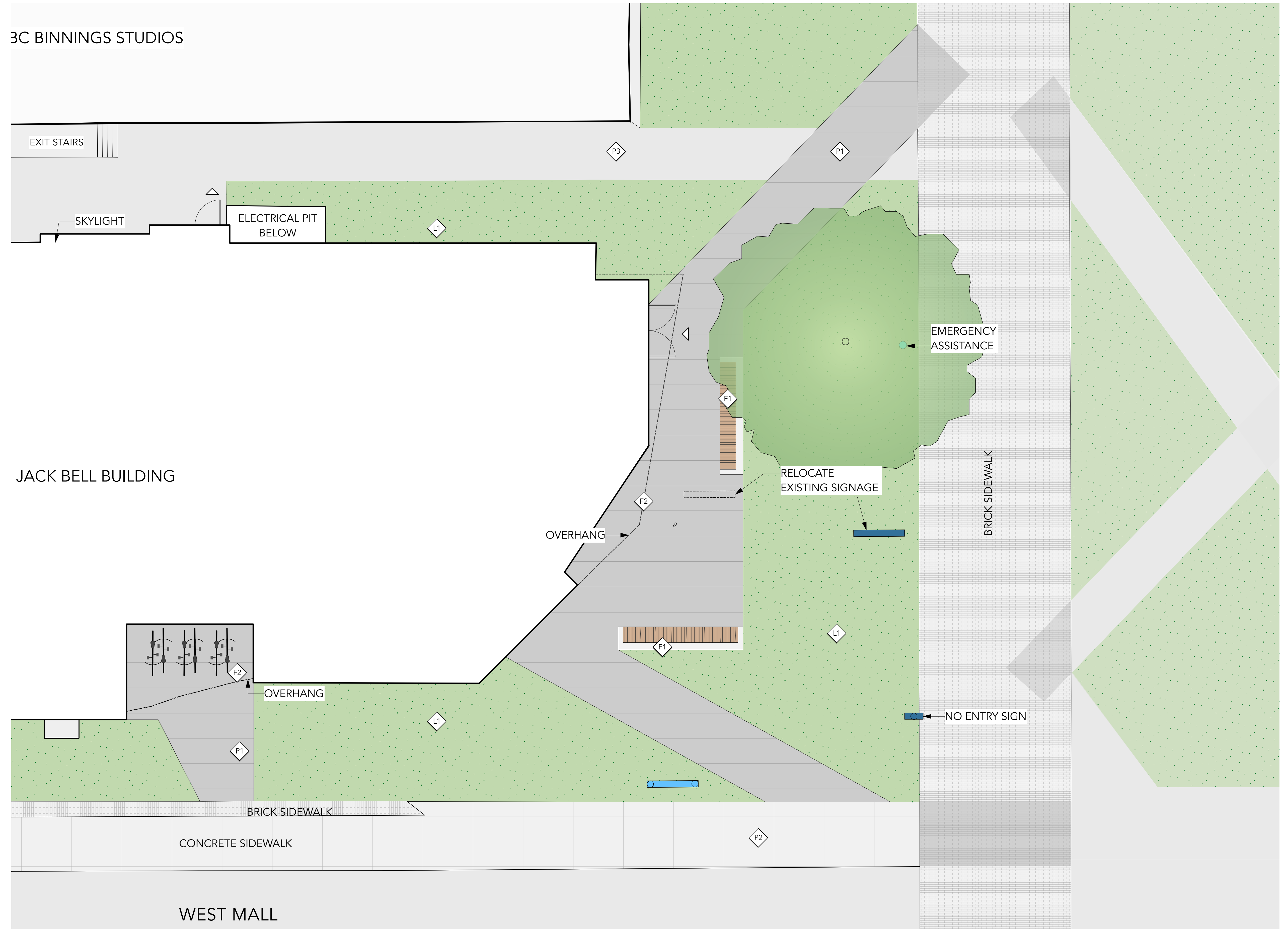
1. ALL DIMENSIONS ARE METRIC UNLESS OTHERWISE NOTED. VERIFY ALL DIMENSIONS WITH FIELD CONDITIONS. REPORT ANY DISCREPANCIES TO LANDSCAPE ARCHITECT FOR REVIEW AND RESPONSE.
2. ALL UTILITIES TO BE STAKED OUT BY CONTRACTOR AND PROTECTED FOR DURATION OF CONSTRUCTION PERIOD.
3. UNLESS OTHERWISE NOTED, PROVIDE A MINIMUM 2% SLOPE ON ALL HARD AND SOFT LANDSCAPE AREAS TO ENSURE POSITIVE DRAINAGE AWAY FROM BUILDINGS OR TO DRAINAGE STRUCTURES. MAXIMUM 3:1 SLOPE IN SOFT LANDSCAPE AREAS.
4. THE LAYOUT OF ALL HARDSCAPE ITEMS, SITE FURNISHINGS, BOULDERS, LANDSCAPE LIGHTING, PLANTING BEDS AND OTHER MATERIALS IS TO BE STAKED OUT BY THE CONTRACTOR AND APPROVED BY THE LANDSCAPE ARCHITECT PRIOR TO INSTALLATION.
5. ALL SUBSTITUTIONS OF SPECIFIED MATERIALS TO BE APPROVED BY LANDSCAPE ARCHITECT.
6. THIS PLAN IS "NOT FOR CONSTRUCTION" AND IS TO BE SUBMITTED FOR REVIEW TO ENGINEERING SERVICES A MINIMUM OF 8 WEEKS PRIOR TO THE START OF ANY CONSTRUCTION PROPOSED FOR PUBLIC PROPERTY. NO WORK ON PUBLIC PROPERTY MAY BEGIN UNTIL SUCH PLANS RECEIVE "FOR CONSTRUCTION" APPROVAL AND RELATED PERMITS ARE ISSUED. PLEASE CONTACT ENGINEERING, DEVELOPMENT SERVICES AND/OR YOUR ENGINEERING, BUILDING SITE INSPECTOR FOR DETAILS.

MATERIALS LEGEND

| SYMBOL | KEY | DESCRIPTION | DETAIL |
|--------|-----|---|--------|
| | P1 | PLAZA PAVING CIP Concrete bands | |
| | P2 | PAVING TYPE 2 Concrete Sidewalk Existing | |
| | P3 | PAVING TYPE 3 CIP Concrete | |
| | L1 | LAWN | |
| | F1 | 24"W CONCRETE BENCH WITH THERMALLY MODIFIED TIMBER SEAT TOP | |
| | F2 | BIKE RACK TBD | |

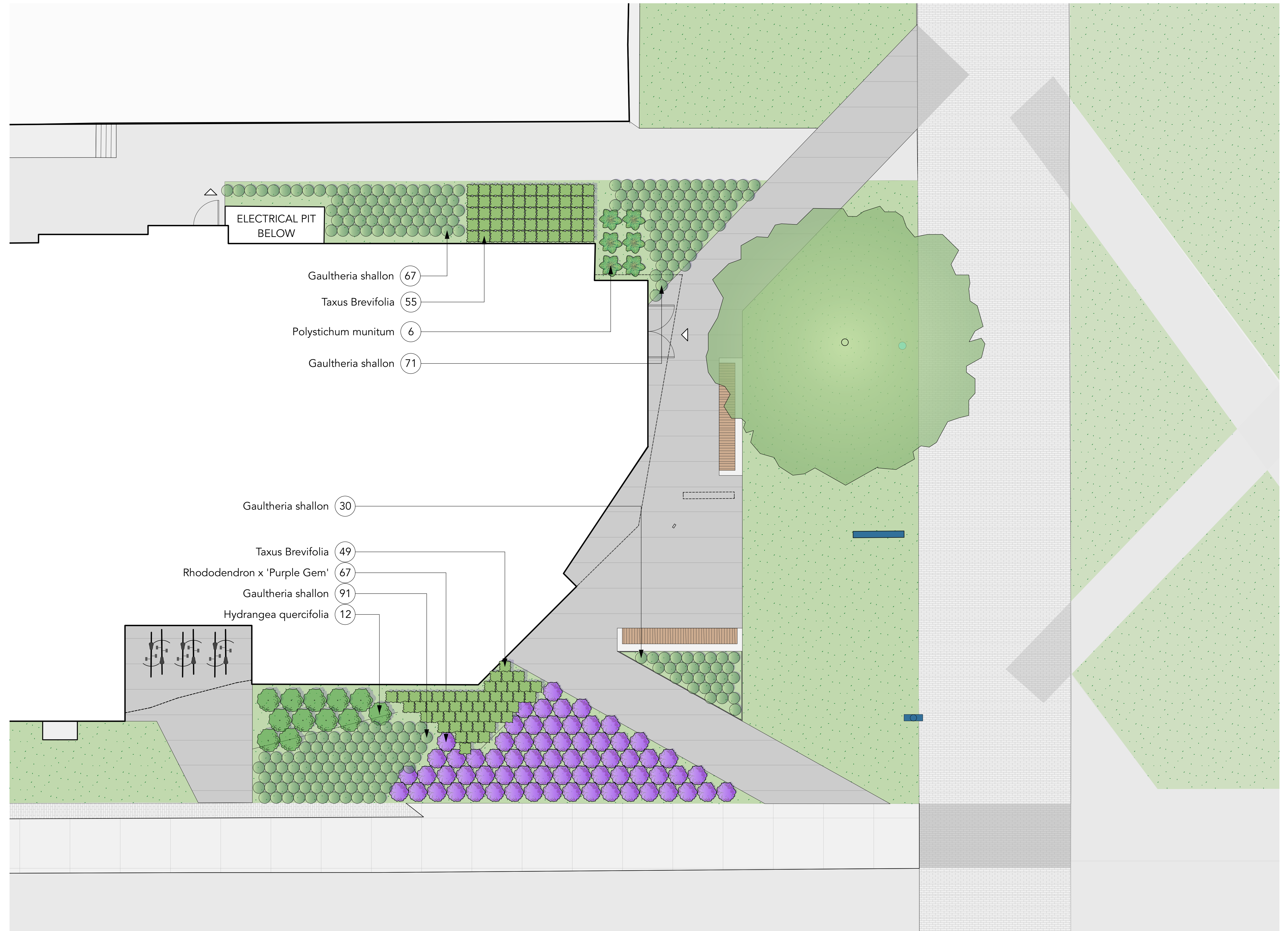
3C BINNINGS STUDIOS

JACK BELL BUILDING



GENERAL PLANTING NOTES:

1. ALL PLANTING SHALL BE IN ACCORDANCE WITH BC LANDSCAPE STANDARD, LATEST EDITION
2. ALL TREE AND SHRUB AREAS TO BE MULCHED WITH 50MM (2") OF MEDIUM FINE MULCH, LESS THAN 50MM (2") DIAMETER.
3. ROOTZONE TO REST ON TAMPED PLANTING SOIL
4. SHRUBS: PREPARE PLANTING HOLES AS SPECIFIED. PLANT AT THE SAME GRADE AS NURSERY. WATER AND FERTILIZE AS SPECIFIED. ENSURE POSITIVE DRAINAGE THROUGHOUT PLANTING BED
5. TREE SIZE AND SPACING TO BE AS PER CITY OF VANCOUVER ARBORIST
6. TREE: PREPARE PLANTING HOLES AS SPECIFIED INSTALL TOP OF ROOTZONE 6" ABOVE FINISHED GRADE OF GROWING MEDIUM. WATER AND FERTILIZE AS SPECIFIED BY NURSERY.
7. FINAL SOFTSCAPE AND GRADING LAYOUTS AS WELL AS LOCATION SPACING TO BE APPROVED BY LANDSCAPE ARCHITECTS IN THE FIELD PRIOR TO INSTALLATION
8. IN CASE OF A DISCREPANCY BETWEEN PLANT INFORMATION ON THE LIST AND ON THE PLAN, THE LATTER SHALL PREVAIL
9. ALL PLANT MATERIAL TO BE MANUALLY WATERED FROM START OF INSTALLATION THROUGH THE END OF THE WARRANTY PERIOD
10. INSTALL TREE PROTECTION FENCING AROUND ALL EXISTING TREES TO CITY OF VANCOUVER STANDARDS. INSTALL TREE PROTECTION FENCING ON NEW PLANTING IF PHASED INSTALLATION IS REQUIRED.
11. FINAL PLANT SPACING, QUANTITY AND TREE PLACEMENT HAS BEEN REVIEWED TO THE SATISFACTION OF GENERAL MANAGER OF ENGINEERING SERVICES
12. ALL PLANTING BEDS TO RECEIVE AUTOMATIC DRIP IRRIGATION

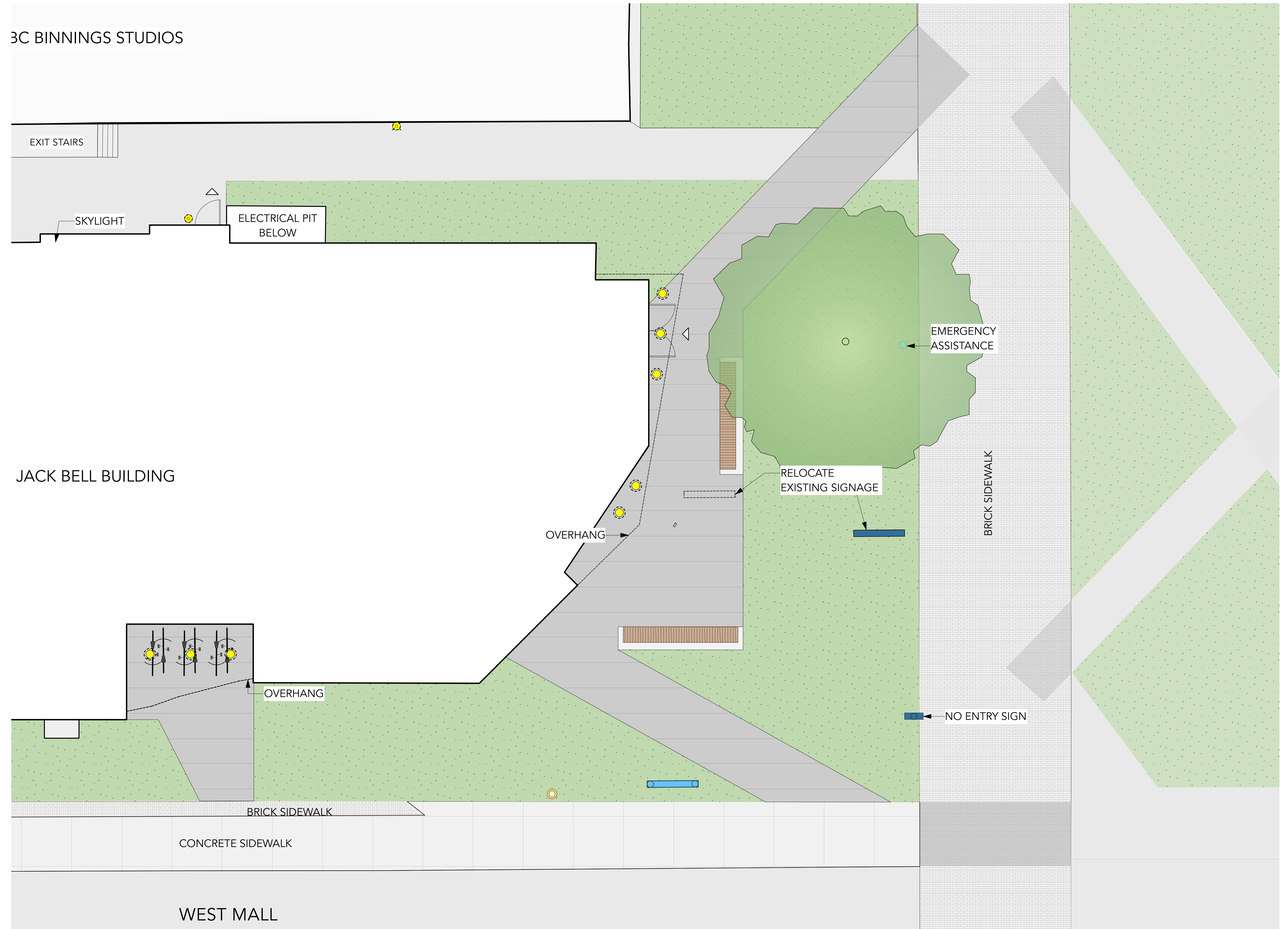


GENERAL LIGHTING NOTES:

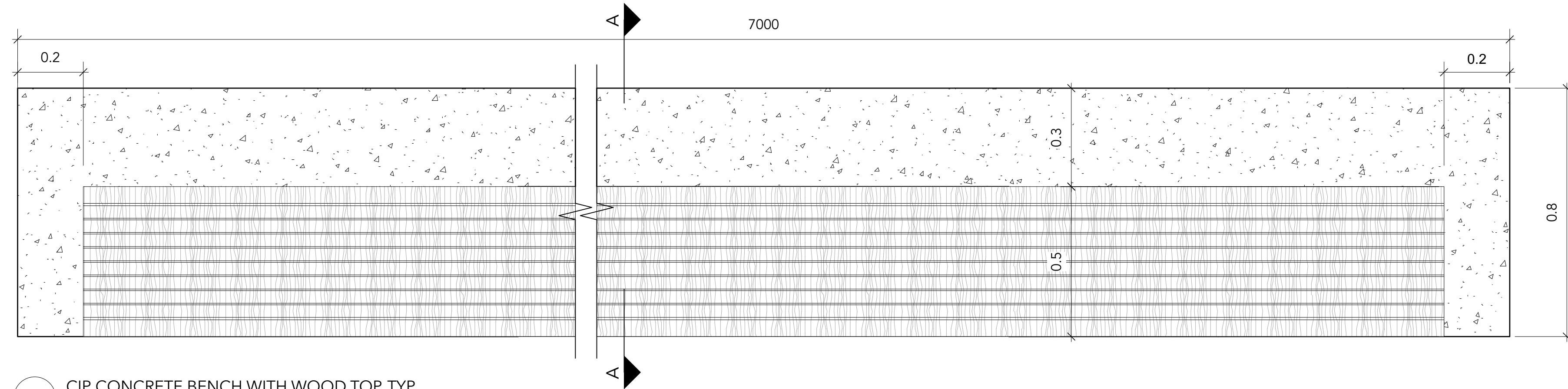
1. THE ELECTRICAL CONTRACTOR SHALL PROVIDE SHOP DRAWINGS FOR ALL ELECTRICAL WORK FOR THE LANDSCAPE ARCHITECT'S APPROVAL. SHOP DRAWINGS SHALL BE SIGNED AND SEALED BY LICENSED ELECTRICAL ENGINEER, OR MASTER ELECTRICIAN. PRIOR TO WORK COMMENCING/INSTALLATION.
2. ALL FIXTURE TYPES, SPACING, AND QUANTITIES TO BE CONFIRMED.
3. PRICE BASED ON LED LIGHT SOURCE FOR APPLICABLE LUMINARIES
4. REFER TO ELECTRICAL ENGINEER FOR SERVICING REQUIREMENTS
5. THE LIGHTING CONTRACTOR IS OBLIGATED TO REFER TO THE LANDSCAPE PLANS AND DETAILS FOR LOCATIONS OF FIXTURES RELATIVE TO THE PROPOSED HARDSCAPE AND PLANTING PLANS. NOTED DIMENSIONS ARE APPROXIMATE. REFER TO NOTE OR ENLARGEMENT, FOR FINAL PLACEMENT. CONTACT LANDSCAPE ARCHITECT FOR CLARIFICATION, IF NEEDED.
6. THE LANDSCAPE ARCHITECT OR CLIENT'S REPRESENTATIVE SHALL APPROVE THE FLAGGED LAYOUT OF THE FIXTURES AND ELECTRICAL SYSTEM PRIOR TO TRENCHING AND/OR FOUNDATION PREPARATION.
7. THE ELECTRICAL/LIGHTING CONTRACTOR IS RESPONSIBLE TO COORDINATE THE PLACEMENT OF SLEEVES PRIOR TO PAVING, SLEEVE MATERIAL SHALL BE SCHEDULE 40 AND AT A MINIMUM DEPTH TO MEET ALL ELECTRICAL CODES.
8. THE ELECTRICAL/LIGHTING CONTRACTOR IS RESPONSIBLE FOR ALL PERMITS, LICENSES, AND ASSOCIATED FEES REQUIRED TO INSTALL THE SYSTEM(S) INCLUDING ALL ELECTRICAL CONDUIT, LIGHT FIXTURES, WIRE, PANELS, JUNCTION BOXES AND NECESSARY EQUIPMENT FOR THE COMPLETION OF THE WORK.
9. THE ELECTRICAL/LIGHTING CONTRACTOR IS RESPONSIBLE FOR CONTACTING UTILITY COMPANIES, COMMUNICATIONS PROVIDERS AND OTHERS TO IDENTIFY AND MARK LOCATIONS OF ALL UNDERGROUND UTILITIES WITHIN THE SCOPE OF WORK. KNOWN UTILITIES WHICH MAY BE ENCOUNTERED INCLUDE: ELECTRICAL, STORM SEWER, WATER, AND SANITARY SEWER.
10. VERIFY IN FIELD, ALL LOCATIONS OF FIXTURES, ELECTRICAL LINES OR OTHER LIGHTING SYSTEM ELEMENTS WITHIN THE DRIP LINE OF ANY EXISTING TREES. NOTIFY LANDSCAPE ARCHITECT OF SUCH OCCURRENCES PRIOR TO COMMENCEMENT OF WORK. HAND EXCAVATE WITHIN THE DRIPLINE OF ANY TREE, REFER TO SPECIFICATIONS.
11. ELECTRICAL CONDUIT LAYOUT IS DIAGRAMMATIC ON DOCUMENTS. ADJUST LOCATIONS ON SITE TO ACCOMMODATE EXISTING JOB CONDITIONS AND TO ACHIEVE MINIMAL IMPACT TO IN PLACE AND FUTURE ELEMENTS. AVOID INSTALLATIONS UNDER TREES.
12. THE CONTRACTOR SHALL VERIFY THE LOCATION OF EXISTING ELECTRIC POWER, AND PROPOSED CONNECTIONS AND METERS IN THE FIELD FOR APPROVAL OF THE LANDSCAPE ARCHITECT OR OWNER'S REPRESENTATIVE PRIOR TO INSTALLATION.
13. THE CONTRACTOR SHALL PROVIDE CIRCUIT BREAKERS, AND PHOTO CELL CONTACTORS FOR ACTIVATION OF LIGHTING CIRCUITS.
14. THE CONTRACTOR SHALL PROVIDE CIRCUIT BREAKERS AND ASTRONOMIC TIME CLOCK FOR DE-ACTIVATION ON LIGHTING CIRCUITS.
15. THE LIGHTING SYSTEM SHALL BE PHOTOCELL ON, TIMER OFF.

LIGHTING LEGEND

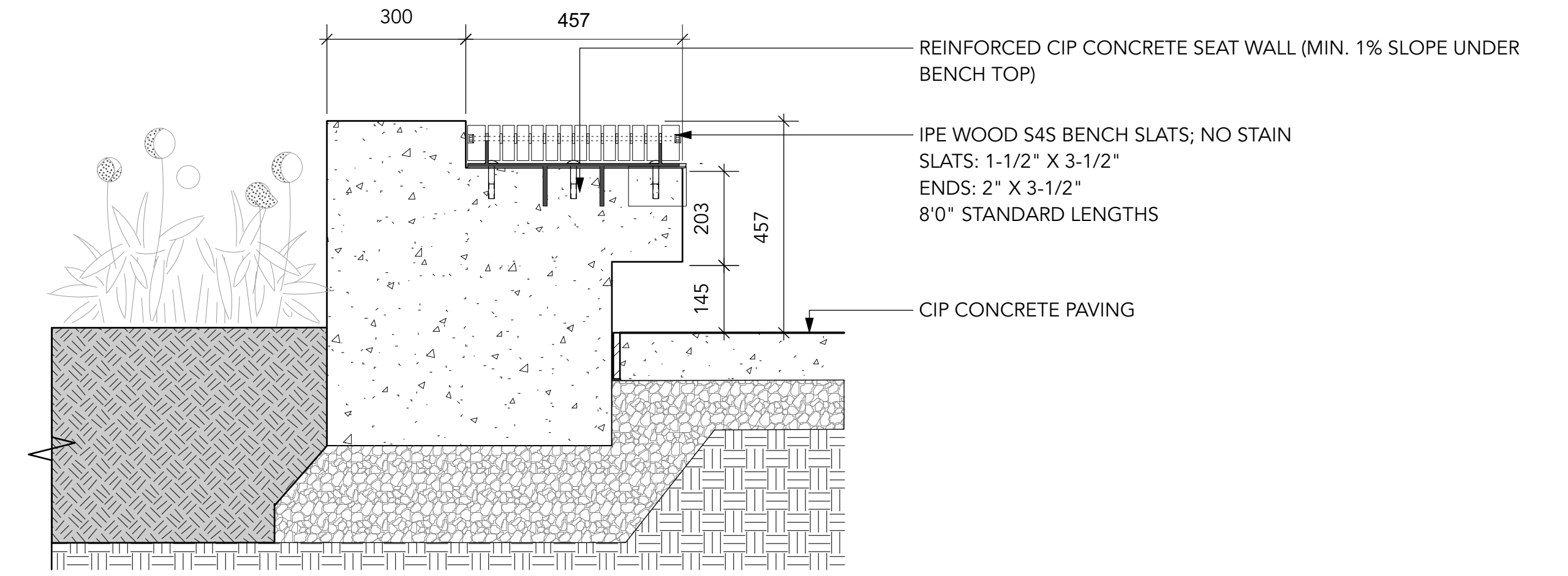
| SYMBOL | DESCRIPTION |
|--------|---------------------------------|
| | EXISTING LIGHT POLE TO REMAIN |
| | PROPOSED LIGHT. REFER TO LIGHT1 |
| | PROPOSED LIGHT. REFER TO LIGHT1 |
| | PROPOSED LIGHT. REFER TO LIGHT1 |
| | EXISTING DEVICE TO REMAIN |



- NOTES:
1. EXP. JOINTS 6096mm [20'0"] O.C. MAX (@ CURB, BUILDING EDGE CUT LINES, CHANGES IN MATERIALS. SPACING TO COINCIDE W/ PATTERN)
 2. CONTROL JOINTS @ 1524mm [5'0"0"] O.C. MAX
 3. FINAL LOCATIONS TO BE CONFIRMED ON SITE
 4. STRUCTURAL ENGINEER TO CONFIRM DEPTH AND REINFORCEMENT
 5. MIN 40 MPa CONCRETE OR BETTER









1 CIP CONCRETE BENCH WITH WOOD TOP, TYP.
Scale: 1:10



2 CIP CONCRETE BENCH WITH WOOD TOP, TYP.
Scale: 1:10

OVERALL PLANT LIST

| Symbol | Quantity | Latin Name | Common Name | Scheduled Size | Spacing | Notes |
|---|----------|--------------------------------------|---------------------------|----------------|------------|----------------------|
| DECIDUOUS TREES: | | | | | | |
|  | 5 | Fraxinus americana 'autumn applause' | Autumn Applause White Ash | 5cm cal. | As Shown | B&B Specimen |
| SHRUBS: | | | | | | |
|  | 105 | Taxus Brevifolia | Pacific Yew | B&B | 0.457 o.c. | B&B Specimen, 5' Ht. |
|  | 67 | Rhododendron x 'Purple Gem' | purple gem rhododendron | #2 Pot | 0.762 o.c. | Specimen. |
|  | 13 | Hydrangea quercifolia | Oakleaf Hydrangea | #5 Pot | 0.914 o.c. | |
|  | 259 | Gaultheria shallon | Salal | #1 Pot | 0.457 o.c. | |
| PERENNIALS, GRASSES, GROUNDCOVER: | | | | | | |
|  | 6 | Polystichum munitum | Western sword fern | #3 Pot | 0.914 o.c. | |

NOTES:

1. ALL PLANT MATERIAL AND LANDSCAPING PRACTICES SHALL BE COMPLIANT WITH THE LATEST EDITION OF THE BCLNA NURSERY STANDARD.
2. IN CASE OF DISCREPANCY BETWEEN PLANT INFORMATION ON THE LIST AND ON THE PLAN, THE LATTER SHALL PREVAIL.
3. FINAL SOFTSCAPE AND GRADING LAYOUTS AS WELL AS LOCATION AND SPACING TO BE APPROVED BY LANDSCAPE ARCHITECT IN THE FIELD PRIOR TO INSTALLATION.
4. ALL PLANT MATERIAL TO BE MANUALLY WATERED FROM START OF INSTALLATION THROUGH THE END OF THE WARRANTY PERIOD.
5. INSTALL TREE PROTECTION FENCING AROUND ALL EXISTING TREES TO CITY STANDARDS, INSTALL TREE PROTECTION FENCING ON NEW PLANTING IF PHASED INSTALLATION IS REQUIRED.
6. FINAL LOCATION, QUANTITY, TREE SPECIES TO THE SATISFACTION OF THE GENERAL MANAGER OF ENGINEERING.
7. NEW TREE MUST BE OF GOOD STANDARD, MINIMUM 6 CM CALLIPER AND INSTALLED WITH APPROVED ROOT BARRIERS, TREE GUARDS AND APPROPRIATE SOIL.
8. ROOT BARRIERS SHALL BE 8'-0" (2.4M) LONG AND 18" (0.46M) DEEP. PLANTING DEPTH OF ROOT BALL MUST BE BELOW SIDEWALK GRADE. NEW STREET TREES TO BE CONFIRMED PRIOR TO ISSUANCE OF THE BUILDING PERMIT.

PLANT IMAGES

GROUNDCOVERS



Gaultheria Shallon
Salal



Taxus Brevifolia
Pacific Yew

FERNS



Polystichum munitum
Western Sword Fern

SHRUBS



Rhododendron x 'Purple Gem'
Purple Gem Rhododendron



Hydrangea quercifolia
Oakleaf Hydrangea

DECIDUOUS TREES



Fraxinus americana 'autumn applause'
Autumn Applause White Ash